



Our forest

The Green Core

Annual Report 2020

We grow a forest. Together.

Dear customer,

In the beginning of 2020 our voluntary Green Core team went to Lobou, France to plant the first 3.000 trees in our forest. We embarked in the early morning hours and had a 12-hour journey in front of us. Our trailer was set with shovels, protective gear, food and of course our 3.000 oak trees. We were a team of 6 and highly motivated.

For the Recypack team this was a dream and vision that was finally being fulfilled after many years and a lot of planning. A solid and successful foundation needs good preparation and takes time.

We arrived Thursday late afternoon, around 5 pm. The oak trees were in danger of drying out, so we had to secure all 3.000 in a shallow grave that provided moisture and protection during the night. The following 2 days we planted the trees in teams of 2. It was a lot of hard but rewarding work. We filled 0,95 hectares of land with nothing more than shovels and pure manpower.

We would like to thank all of our 1.026 sponsors.
With your help we are making this possible.

The next visit to our forest is planned for Q3 of 2020.
The newly planted trees don't get enough sunlight as the grass grows over them. Therefore, it is important to cut the grass and remove weeds for the first two years after planting. After that, the trees are high enough to get sunlight.

In this brochure you can read all about the Recypack forest, the new forest, where you can find this forest and what you can do to help and volunteer.
We call this 'The Green Core' of Recypack.



Olaf Perlee
Director

Our 2020 team



NEXT FOREST

2.000 trees will be planted here

Forest 1 Lobou

- Land size 0,63 ha;
- 0 existing trees;
- The ground must first be cleared and ploughed before the trees can be planted;
- In the beginning of Q4 our voluntary team will go and plant 2.000 oak, birch and alder trees.



We have decided that the 2.000 trees that will be planted in November 2020 will be planted on forest 1.

During our last visit we looked at the possibilities to plant trees on forest 1. This land is in a watery area. A riverbank runs through it, which in the winter fills with water. We have to take this into account when choosing trees. That is why we chose a combination of oak, birch and alder trees. These trees absorb water well and are resistant to wet roots.

We have built a small community of helpers in France that support and believe in The Green Core. One of them is our local farmer that has helped us tremendously the last time and is looking forward to plough the land and get the ground loose for us this year.





NEW FOREST

3.000 trees have been planted here

Our first completed forest

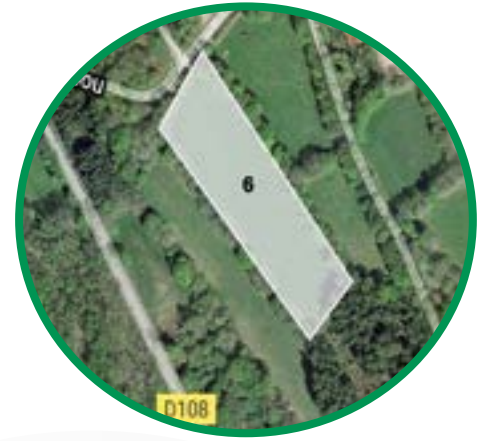
Forest 6 Lobou

Forest 6 has turned into a CO₂ giving land. Before we planted this 0,95 ha land it was just a piece of property growing weeds not supporting or growing the local biodiversity of Lobou. The indigenous oak trees we planted will provide support and stimulation for the local environment.

3.000 trees that have been sponsored by you, our business sponsors and Recypack.

FACTS

- New forests support local biodiversity;
- 3.000 indigenous oak trees;
- 1 oak tree absorbs 5.280 gram of CO₂ per year.





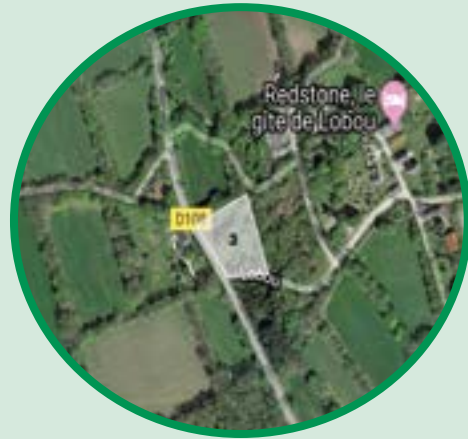
Forest to build: 2 Lobou

- Land size 1,35 ha;
- 0 existing trees;
- The ground must first be cleared and ploughed before the trees can be planted;
- There is a stone wall surrounding this land.



Forest: 3 Lobou

- Land size 0,35 ha;
- 175 existing trees;
- The land will remain its original state.



Forest: 4 Lobou

- Land size 0,27 ha;
- 169 existing trees;
- The land will remain its original state.



Forest to build: 5 Lobou

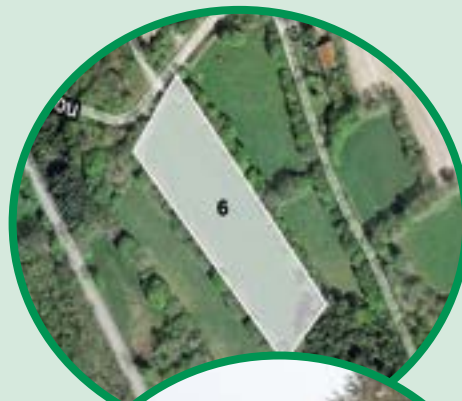
- Land size 0,41 ha;
- 0 existing trees;
- The ground must first be cleared and ploughed before the trees can be planted.



Forest: 6 Lobou

COMPLETED FOREST !

- Land size 0,95 ha;
- 3.000 oak trees planted;
- Next visit and inspection Q3/Q4 2020.



Forest to build: 7 Lobou

- Land size 0,43 ha;
- 0 existing trees;
- The ground must first be cleared and ploughed before the trees can be planted.



Forest to build: 8 Lobou

- Land size 0,82 ha;
- 0 existing trees;
- The ground must first be cleared and ploughed before the trees can be planted.



Forest: 9 Lobou

- Land size 1,97 ha;
- 176 existing trees;
- The land will remain its original state.



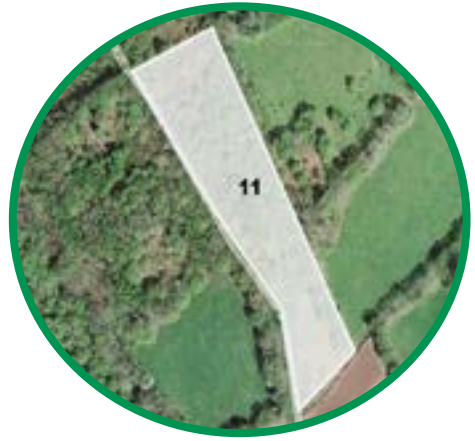
Forest: 10 Lobou

- Land size 0,82 ha;
- 554 existing trees;
- The land will remain its original state.



Forest: 11 Lobou

- Land size 1,25 ha;
- 875 existing trees;
- The land will remain its original state.



Forest: 12 Lobou

- Land size 0,40 ha;
- 250 existing trees;
- The land will remain its original state.



About your donated tree

Thank you for your donation!

With your order, above € 999, -, you automatically donate a tree to The Green Core Foundation. This will be planted on your behalf in our special Recypack forest. Each tree donated by you contributes to our goal of reducing our CO2. We are doing business with a clear conscience!

Every tree you donate to the Green Core Foundation is registered in your name and linked to your order number and is therefore traceable.

Is it possible to visit the forest?

Yes! The Recypack forest is freely accessible, so you can always visit it to enjoy the extra piece of nature that has been made possible thanks to your donation.

Where will the forest be planted?

We purchased the first 12 Plots in France , Brittany. We will plant twice a year. In early spring and late Autumn.

Does Recypack also donate trees?

Yes! Recypack reserves a significant part of its profit after interest and before tax to invest in The Green Core project. In addition, Recypack is striving to become CO2 neutral by implementing a series of policy changes. This includes planting trees. Every planted tree contributes to CO2 reduction.

When will my donated tree be planted?

Based on the number of donations we make an inventory of how many trees should be planted.

The trees and the forest are managed by The Green Core Foundation. You can follow the activities of the construction and maintenance of the forest at:
www.recypack.com/greencore

“

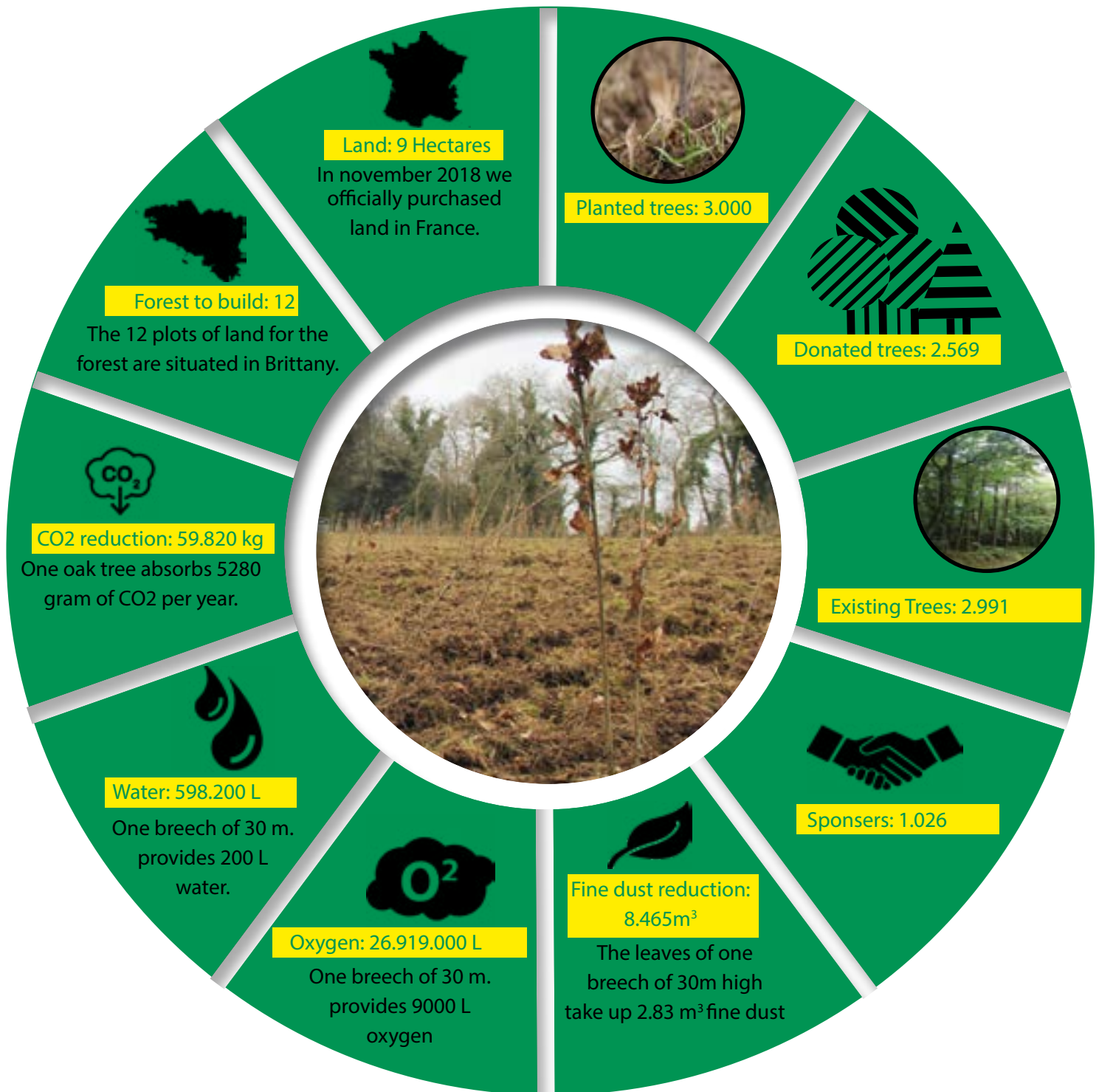
Recypack is growing a forest. Not for commercial purposes, but for nature. This means that trees will be selected based on their ability to support and sustain the biodiversity of the region. The forest will also be a place to shelter and nurture local flora and fauna. In addition, the forest will be grown with indigenous tree species of the region which will support and contribute to stimulating and strengthening the environment.

”

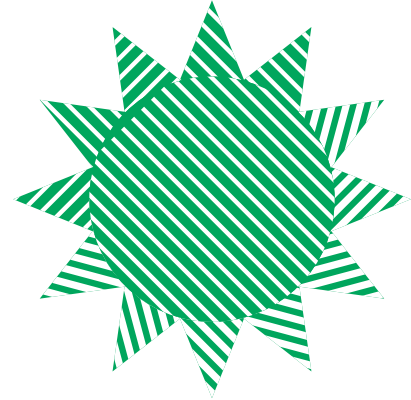


What we have achieved

2020 is an amazing kick of year for The Green Core foundation.
We will keep you updated on the website: www.thegreencore.org
(Updated: 21:5-2020)



What you should know about **RECYPACK**



UNIQUE IN THE WORLD!

The **transport** from Recypack to your business is CO2 neutral!

We decided that we want to compensate for all driven mileage with cars from our account management team, all driven miles to deliver the goods to you, both pallet orders and packages; and all the kilometers our employees drive from – and to the office / warehouse.

Our production facilities are also heading in the same direction and reducing CO2. This is extremely unique what Recypack is doing.



We hold our Production facilities accountable. Each year we contact them and encourage them to become more CO2 Neutral and to minimize their carbon Footprint.



How you can **HELP**

Do you have a green thumb and enjoy working outside but would you like to do more for our planet? Then we need you! Because our Recypack forest needs care and attention from loving volunteers.

You can sign up as a volunteer by sending us a message on www.thegreencore.org or on our Facebook or LinkedIn page.

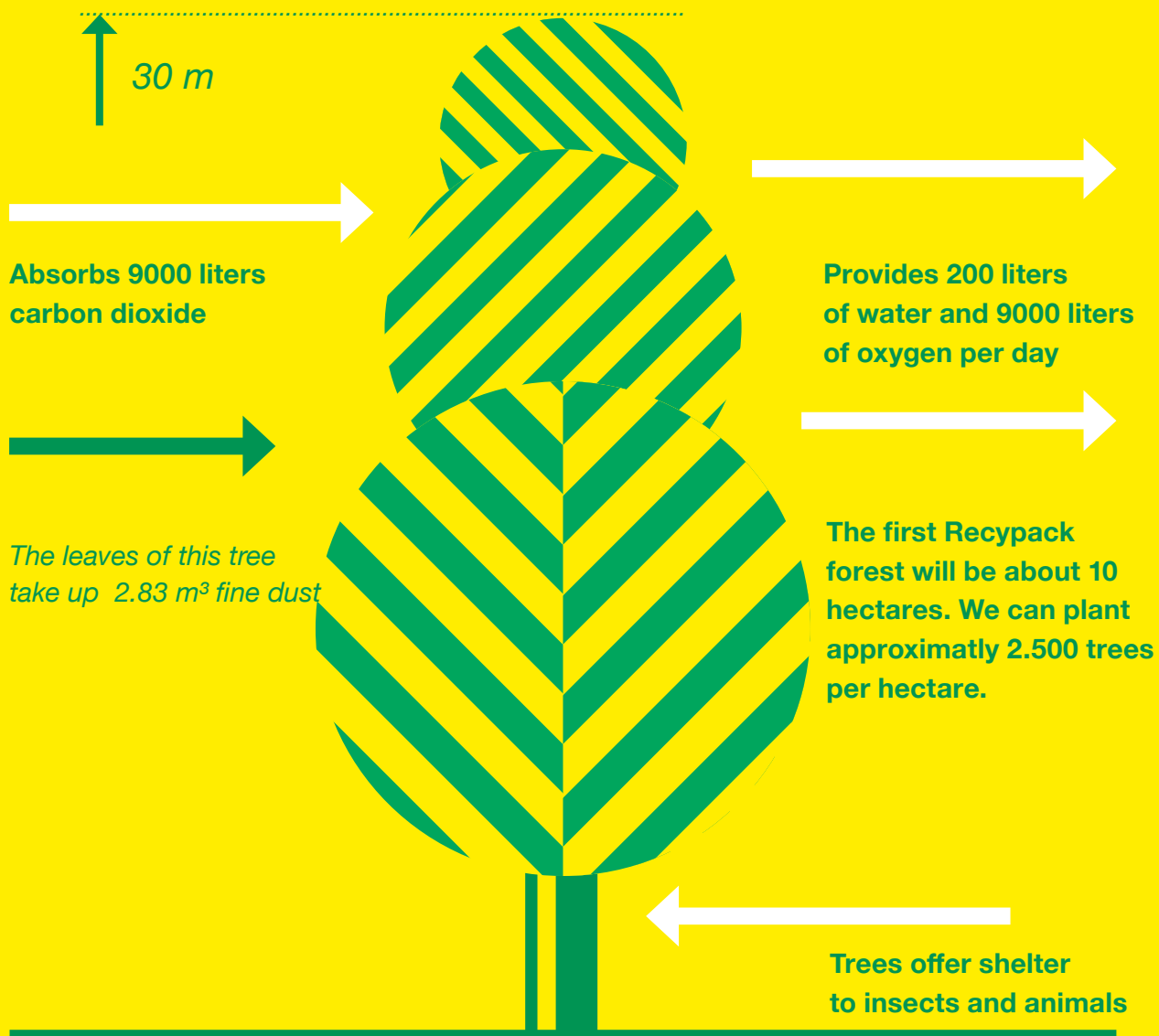
We hope to hear from you soon!



How much oxygen does a tree provide on a sunny day?

A beech of 30 meters high absorbs 9000 liters of carbon dioxide on a sunny day, gives 200 liters of water and 9000 liters of oxygen! That is equal to the daily use of oxygen of one person. A hundred-year-old beech with a leaf area of 1,500 m² can meet the annual oxygen demand of ten people. In addition, the leaves of this tree take up another 2.83 m³ fine dust in the months that the tree is in leaf and can absorb the same amount of dust after every rain shower.

Forests provide rain, filter fresh water and hold the soil. Moreover, they are an important air purifier: forests retain huge amounts of carbon and supply oxygen. (Source WWF)



You can hold us accountable

Social responsibility is an important aspect of our business operations. As an organization, we take responsibility for the effects of our business activities on people, the environment and business operations.

We conduct our business with integrity and in an ethical and socially responsible manner. Therefore, we engage in sustainable practices to protect our planet's natural resources for future generations.



Our organization works according to the principles and requirements of the standard ISO 9001: 2015 and ISO 26000 quality systems. The ISO certificate confirms the quality that we have as our standard.



In 2010 Recypack signed the sustainability treaty as the first packaging trader. And in 2012, we could provide our entire standard assortment with the FSC label. We conduct our business with integrity and in an ethical and socially responsible manner. Therefore, we engage in sustainable practices to protect our planet's natural resources for future generations. Our cardboard products have met the FSC's stringent criteria to receive FSC® Certification.

ANBI
Certified

Since 2008, a domestic or foreign organization can be considered an ANBI by the Dutch State. This has benefits for us as well as for you. As a public benefit institution (ANBI) there are certain tax advantages in the Netherlands.

An institution can only be an ANBI if at least 90% of the expenditure serves the public benefit.

An ANBI is not allowed to make profit with all its generally useful activities.